

# **SOLUTIONS FOR BIOTECHNOLOGY APPLICATIONS**

Media Separated  
Solenoid Valves



# MEDIA SEPARATED SOLENOID VALVES FOR BIOTECHNOLOGY APPLICATION

Camozzi Automation offers the **life science sector** a wide range of components and customised solutions for fluid control – both liquids and gases – that provide **high performance** efficiency and reliability.

Our solutions include technologies and devices used to diagnose, monitor, evaluate and **treat patients** with a wide variety of symptoms and conditions.

The demands of life science applications can be extremely broad and have very different requirements. For example, with analytical or diagnostic devices, it is essential to offer **extreme precision and maximum accuracy** of controlled flows.

For this reason, Camozzi components are designed from the outset to meet industry requirements for fluid compatibility, energy efficiency, miniaturisation, and safety standards in order to **safeguard patients' health**.

## Media separated solenoid valve

### SERIES K8DV



Function:	2/2 NC
Orifice diameter:	0.7 mm
Operating pressures:	0 ÷ 2.1 bar (FKM/EPDM) 0 ÷ 1.5 bar (FFKM)
kv flow coefficient:	0.1 l/min

## Media separated solenoid valve

### SERIES PDV



Function:	2/2 NC
Orifice diameter:	0.8 ... 2 mm
Operating pressures:	0 ÷ 7 bar (FKM/EPDM) 0 ÷ 3 bar (FFKM)
kv flow coefficient:	0.25 ... 0.8 l/min

## Media separated solenoid valve

### SERIES KDV



Function:	3/2 UNI , 2/2 NC, 2/2 NO
Orifice diameter:	0.8 ... 1.3 mm
Operating pressures:	-0.95 ... 2.0 bar
kv flow coefficient:	0.2 ... 0.4 l/min

## Media separated solenoid valve

### SERIES LDV



Function:	3/2 UNI, 2/2 NC, 2/2 NO
Orifice diameter:	0.8 ... 1.6 mm
Operating pressures:	-0.95 ... 6 bar
kv flow coefficient:	0.3 ... 0.8 l/min





Diaphragm and pinch media separation technology



Suitable for aggressive, high-purity or temperature-sensitive fluids



High flow rates



High precision & repeatability

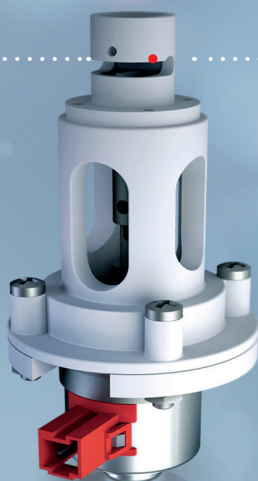


Low dead volume



3/2 and 2/2-way function

## NEW PRODUCTS READY TO IMPROVE



### Motor Pinch proportional valve

COMING SOON

Function:	2/2 NC – 2/2 NO
Voltage:	Stepper motor 24 V DC
Tube diameter:	Ø 4 mm

COMING SOON

### Piezo proportional valve

Function:	2/2 NC
Voltage:	From 6 V DC to 24 V DC
Control signal:	0-10 V





Automation

A Camozzi Group Company

[camozzi.com](https://camozzi.com)

## Contacts

### **CamoZZi Automation**

#### **S.p.A.**

Società Unipersonale

REGISTERED OFFICE

Via R. Rubattino, 81

20134 Milano

Italy

OPERATIONAL HEADQUARTERS

Via Eritrea, 20/I

25126 Brescia

Italy

Tel. +39 030 37921

[marketing@camozzi.com](mailto:marketing@camozzi.com)

### **Customer Service**

Tel. +39 030 3792790

[service@camozzi.com](mailto:service@camozzi.com)

### **Export Department**

Tel. +39 030 3792253

[sales@camozzi.com](mailto:sales@camozzi.com)

